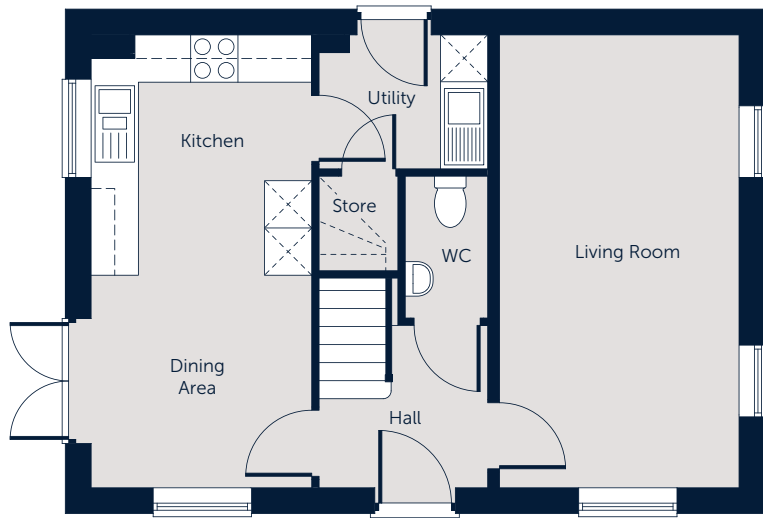


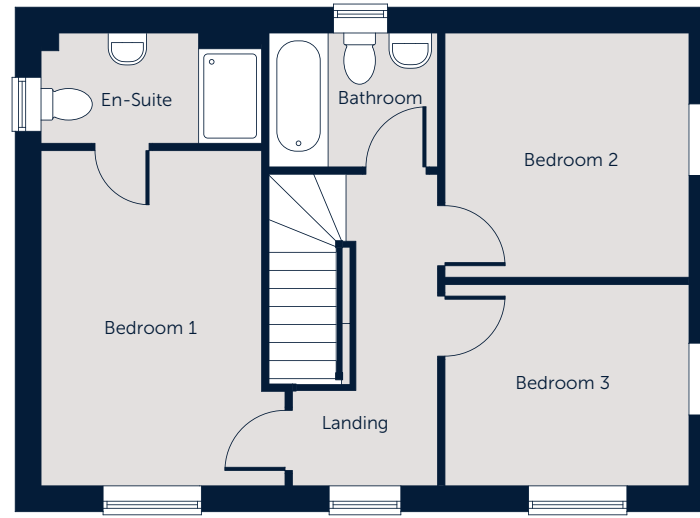
THE ASH
3 BEDROOM HOME



THE ASH FLOOR PLAN



GROUND FLOOR



FIRST FLOOR

- Open plan kitchen/dining room with glazed doors to the garden
- Dual aspect living room
- Utility room with door to the outside
- Useful under stairs store
- Master bedroom with en-suite shower room
- Well equipped family bathroom

Please note:

Illustration and plans show a typical house type. The house type may be built in a range of elevational finishes using a variety of materials. Floor plans and window positions may vary from plot to plot. This is because we operate a policy of continuous improvement and we work within the needs of the Planning Authorities. Please ask your Sales Executive for the precise details of the finish and specifications of your chosen home

GROUND FLOOR

Living Room
5.74m x 3.04m (18'10" x 10'0")

Kitchen
3.05m x 2.80m (10'0" x 9'2")

Dining Room
2.69m x 2.80m (8'10" x 9'2")

Utility Room
1.72m x 2.14m (5'7" x 7'0")

WC
1.80m x 1.03m (5'11" x 3'5")

FIRST FLOOR

Bedroom 1
4.25m x 3.09m (14'0" x 10'2")

En-Suite
1.40m x 2.80m (4'7" x 9'2")

Bedroom 2
3.10m x 3.09m (10'2" x 10'2")

Bedroom 3
2.55m x 3.09m (8'5" x 10'2")

Bathroom
1.72m x 2.14m (5'8" x 7'0")

NB: All dimensions are maximum and may vary from plot to plot.

Gross internal floor area 1032 sq ft

THE CHESTNUT
4 BEDROOM HOME



THE CHESTNUT

FLOOR PLAN

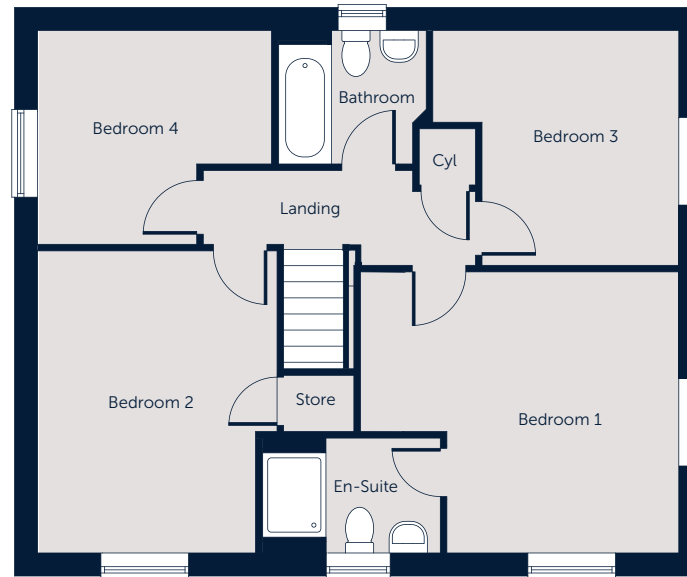


GROUND FLOOR

- Open plan kitchen/family room with glazed doors to the garden
- Separate dining room
- Utility room with store and door to the outside
- Side facing living room
- Downstairs cloakroom
- Useful under stairs store
- Master bedroom with en-suite shower room
- Well equipped family bathroom

Please note:

Illustration and plans show a typical house type. The house type may be built in a range of elevational finishes using a variety of materials. Floor plans and window positions may vary from plot to plot. This is because we operate a policy of continuous improvement and we work within the needs of the Planning Authorities. Please ask your Sales Executive for the precise details of the finish and specifications of your chosen home.



FIRST FLOOR

GROUND FLOOR

Living Room
4.79m x 3.35m (15'9" x 11'0")

Kitchen
4.55m x 3.35m (14'11" x 11'0")

Family Room
2.88m x 3.35m (9'6" x 11'0")

Dining Room
2.55m x 3.35m (8'4" x 11'0")

Utility Room
1.95m x 2.12m (6'5" x 7'0")

WC
1.50m x 1.03m (4'11" x 3'5")

FIRST FLOOR

Bedroom 1
4.00m x 4.53m (13'2" x 14'10")

En-Suite
1.63m x 2.52m (5'4" x 8'4")

Bedroom 2
4.29m x 3.40m (14'1" x 11'2")

Bedroom 3
3.34m x 3.50m (11'0" x 11'6")

Bedroom 4
3.04m x 3.32m (10'0" x 10'11")

Bathroom
1.90m x 2.10m (6'3" x 6'11")

NB: All dimensions are maximum and may vary from plot to plot.

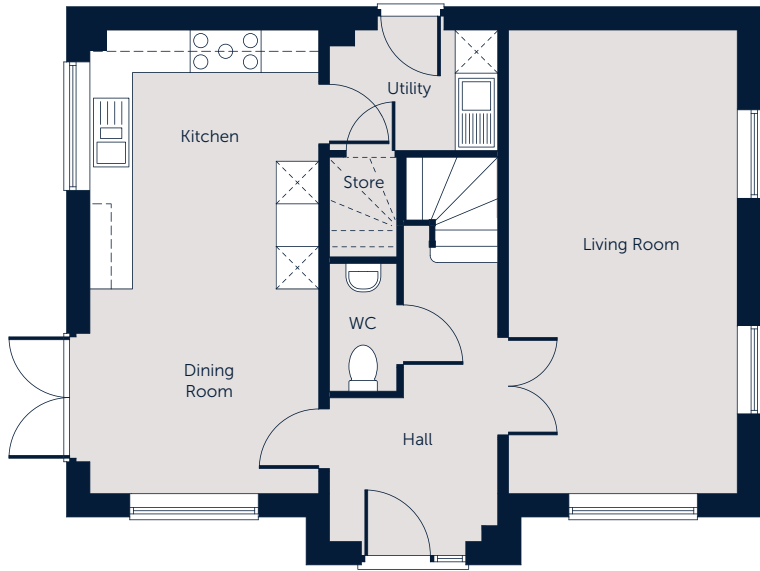
Gross internal floor area 1478 sq ft

THE BIRCH
4 BEDROOM HOME



THE BIRCH

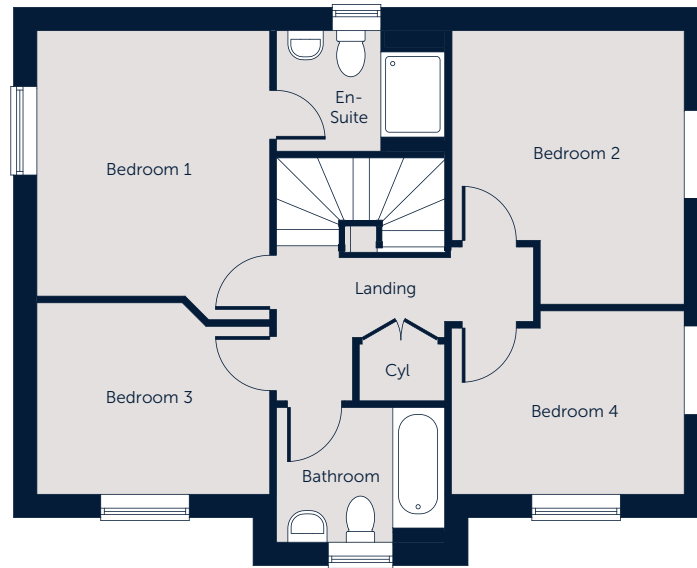
FLOOR PLAN



GROUND FLOOR

- Open plan kitchen/dining room with glazed doors to the garden
- Dual aspect living room with double doors off the hall
- Utility room with door to the outside
- Downstairs cloakroom
- Useful under stairs store
- Master bedroom with en-suite shower room
- Well equipped family bathroom

Please note:
 Illustration and plans show a typical house type. The house type may be built in a range of elevational finishes using a variety of materials. Floor plans and window positions may vary from plot to plot. This is because we operate a policy of continuous improvement and we work within the needs of the Planning Authorities. Please ask your Sales Executive for the precise details of the finish and specifications of your chosen home.



FIRST FLOOR

GROUND FLOOR

Living Room
 6.53m x 3.22m (21'5" x 10'7")

Kitchen
 3.65m x 3.22m (12'0" x 10'7")

Dining Room
 2.88m x 3.22m (9'6" x 10'7")

Utility Room
 1.70m x 2.37m (5'7" x 7'9")

WC
 1.80m x 0.95m (5'11" x 3'1")

FIRST FLOOR

Bedroom 1
 4.07m x 3.28m (13'5" x 10'9")

En-Suite
 1.70m x 2.37m (5'7" x 7'9")

Bedroom 2
 3.85m x 3.27m (12'8" x 10'9")

Bedroom 3
 2.70m x 3.28m (8'10" x 10'9")

Bedroom 4
 2.58m x 3.28m (8'6" x 10'9")

Bathroom
 1.90m x 2.37m (6'3" x 7'9")

NB: All dimensions are maximum and may vary from plot to plot.

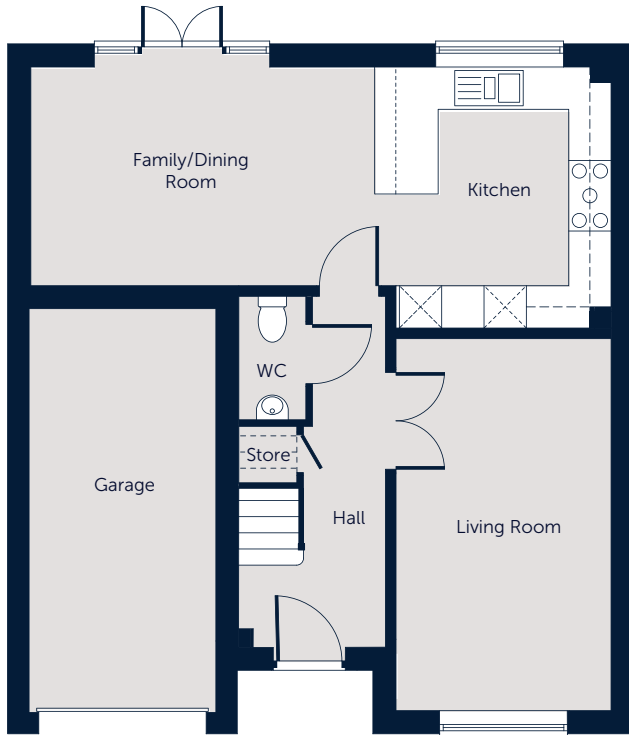
Gross internal floor area 1335 sq ft

THE JUNIPER
3 BEDROOM HOME



THE JUNIPER

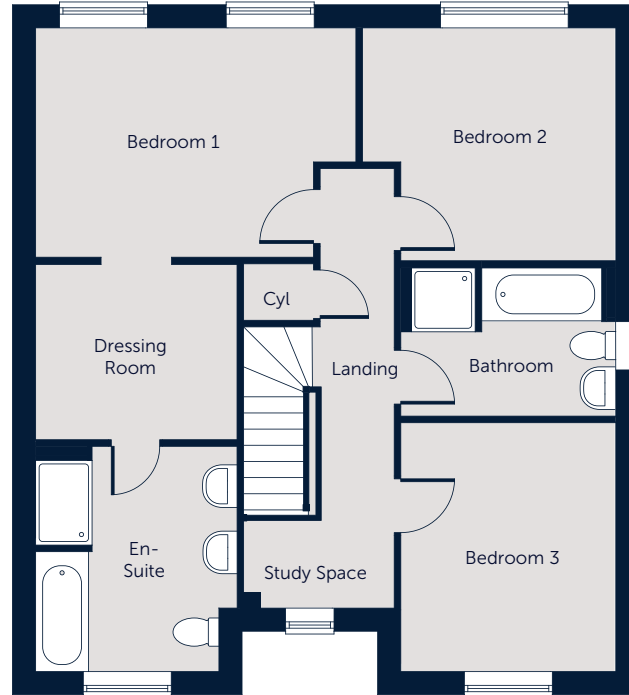
FLOOR PLAN



GROUND FLOOR

- Open plan kitchen/family/dining room with glazed doors to the garden
- Front facing living room with double door to the hallway
- Useful under stairs store
- Study space to landing
- Downstairs cloakroom
- Master bedroom with dressing room and en-suite bathroom
- Family bathroom with bath and shower

Please note:
 Illustration and plans show a typical house type. The house type may be built in a range of elevational finishes using a variety of materials. Floor plans and window positions may vary from plot to plot. This is because we operate a policy of continuous improvement and we work within the needs of the Planning Authorities. Please ask your Sales Executive for the precise details of the finish and specifications of your chosen home.



FIRST FLOOR

GROUND FLOOR

Living Room
 5.27m x 3.04m (17'4" x 10'0")

Kitchen
 3.70m x 3.35m (12'2" x 11'0")

Family/Dining Room
 3.10m x 4.87m (10'2" x 16'0")

WC
 1.75m x 0.95m (5'9" x 3'1")

FIRST FLOOR

Bedroom 1
 3.25m x 4.53m (10'8" x 14'11")

Dressing Room
 2.48m x 2.85m (8'2" x 9'4")

En-Suite
 3.19m x 2.79m (10'6" x 9'2")

Bedroom 2
 3.30m x 3.59m (10'10" x 11'9")

Bedroom 3
 3.52m x 3.04m (11'7" x 10'0")

Bathroom
 2.10m x 3.04m (6'11" x 10'0")

NB: All dimensions are maximum and may vary from plot to plot.

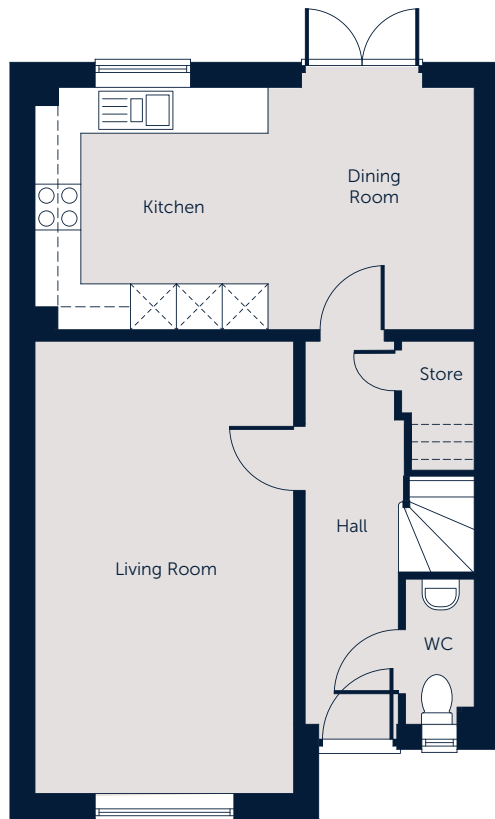
Gross internal floor area 1396 sq ft

THE ROWAN
3 BEDROOM HOME



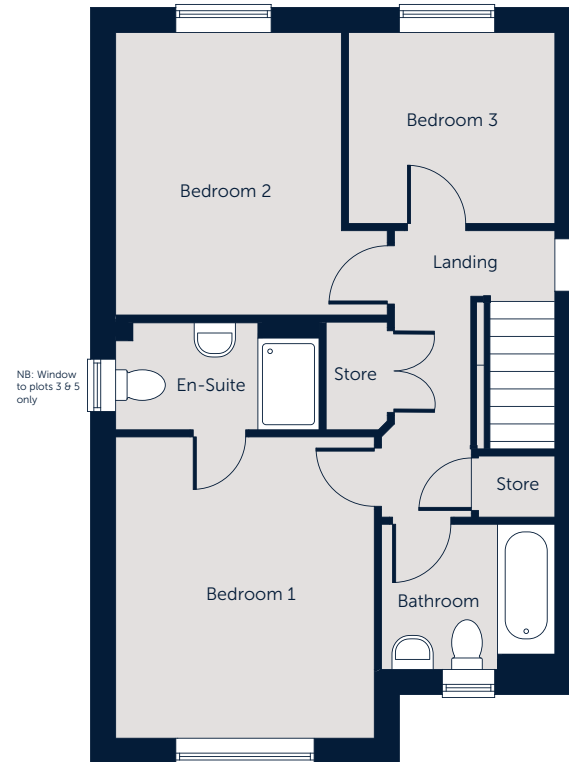
THE ROWAN

FLOOR PLAN



GROUND FLOOR

- Open plan kitchen/dining room with glazed doors to the garden
- Front facing living room
- Useful under stairs store
- Downstairs cloakroom
- Master bedroom with en-suite shower room
- Well equipped family bathroom



FIRST FLOOR

GROUND FLOOR

Living Room
5.83m x 3.38m (19'2" x 11'1")

Kitchen/Dining
3.25m x 5.74m (10'8" x 18'10")

WC
1.90m x 0.90m (6'3" x 2'11")

FIRST FLOOR

Bedroom 1
3.94m x 3.38m (12'11" x 11'1")

En-Suite
1.40m x 2.66m (4'8" x 8'9")

Bedroom 2
3.69m x 2.95m (12'2" x 9'8")

Bedroom 3
2.50m x 2.70m (8'3" x 8'10")

Bathroom
1.90m x 2.27m (6'3" x 7'5")

Please note:
Illustration and plans show a typical house type. The house type may be built in a range of elevational finishes using a variety of materials. Floor plans and window positions may vary from plot to plot. This is because we operate a policy of continuous improvement and we work within the needs of the Planning Authorities. Please ask your Sales Executive for the precise details of the finish and specifications of your chosen home.

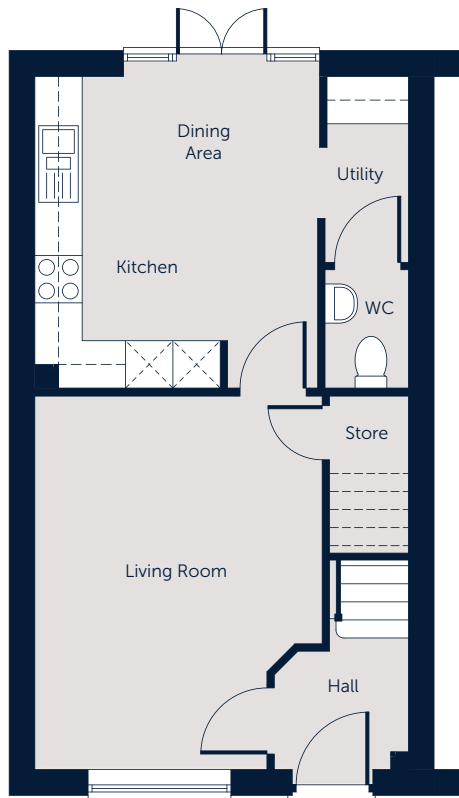
NB: All dimensions are maximum and may vary from plot to plot.

Gross internal floor area 1113 sq ft

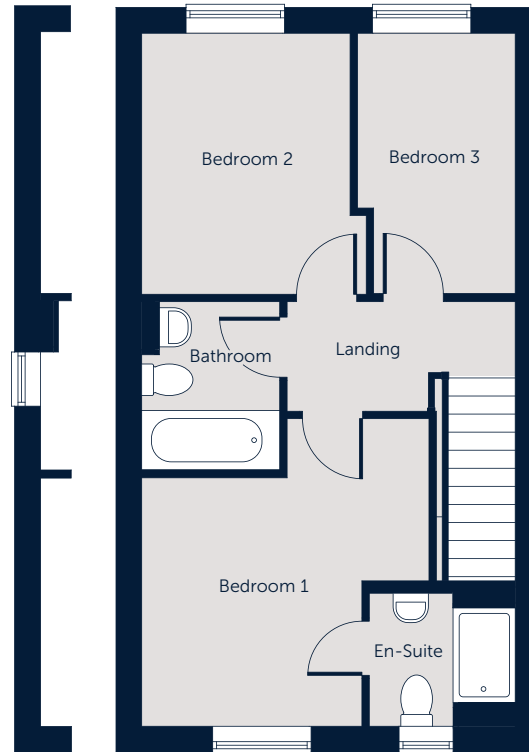
THE LIME
3 BEDROOM HOME



THE LIME FLOOR PLAN



GROUND FLOOR



FIRST FLOOR

- Open plan kitchen/dining room with glazed doors to the garden
- Utility room off the kitchen
- Front facing living room with under stairs store
- Downstairs cloakroom
- Master bedroom with en-suite shower room
- Well equipped family bathroom

Please note:
Illustration and plans show a typical house type. The house type may be built in a range of elevational finishes using a variety of materials. Floor plans and window positions may vary from plot to plot. This is because we operate a policy of continuous improvement and we work within the needs of the Planning Authorities. Please ask your Sales Executive for the precise details of the finish and specifications of your chosen home

GROUND FLOOR

Living Room
4.73m x 3.64m (15'6" x 11'11")

Kitchen/Dining
3.95m x 3.58m (13'0" x 11'9")

Utility Room
2.35m x 1.05m (7'9" x 3'6")

WC
1.50m x 1.05m (4'11" x 3'6")

FIRST FLOOR

Bedroom 1
3.15m x 3.64m (10'4" x 11'11")

En-Suite
1.68m x 1.85m (5'6" x 6'1")

Bedroom 2
3.30m x 2.84m (10'10" x 9'4")

Bedroom 3
3.30m x 2.00m (10'10" x 6'7")

Bathroom
2.13m x 1.75m (7'0" x 5'9")

NB: All dimensions are maximum and may vary from plot to plot.

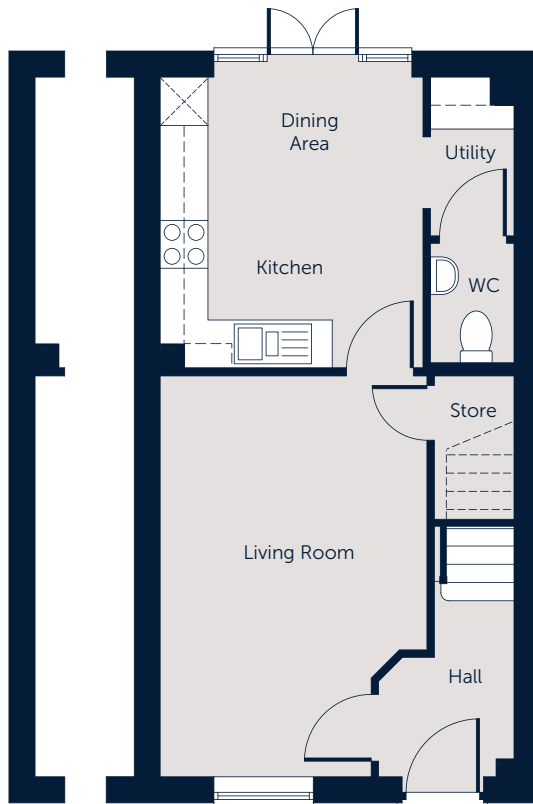
Gross internal floor area 910 sq ft

THE ELDER
2 BEDROOM HOME

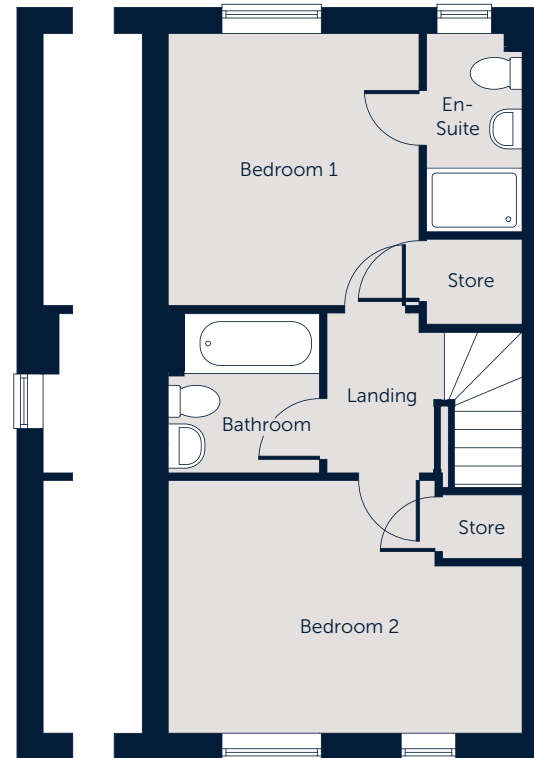


THE ELDER

FLOOR PLAN



GROUND FLOOR



FIRST FLOOR

- Open plan kitchen/dining room with glazed doors to the garden
- Utility room off the kitchen
- Front facing living room with under stairs store
- Downstairs cloakroom
- Master bedroom with en-suite shower room
- Well equipped family bathroom

Please note:
 Illustration and plans show a typical house type. The house type may be built in a range of elevational finishes using a variety of materials. Floor plans and window positions may vary from plot to plot. This is because we operate a policy of continuous improvement and we work within the needs of the Planning Authorities. Please ask your Sales Executive for the precise details of the finish and specifications of your chosen home

GROUND FLOOR

Living Room
 5.03m x 3.35m (16'6" x 11'0")

Kitchen/Dining
 3.65m x 3.30m (12'0" x 10'10")

Utility Room
 2.05m x 1.05m (6'4" x 3'5")

WC
 1.50m x 1.05m (4'11" x 3'5")

FIRST FLOOR

Bedroom 1
 3.41m x 3.15m (11'3" x 10'4")

En-Suite
 2.48m x 1.20m (8'2" x 3'11")

Bedroom 2
 3.17m x 4.44m (10'5" x 14'7")

Bathroom
 2.00m x 1.90m (6'7" x 6'3")

NB: All dimensions are maximum and may vary from plot to plot.

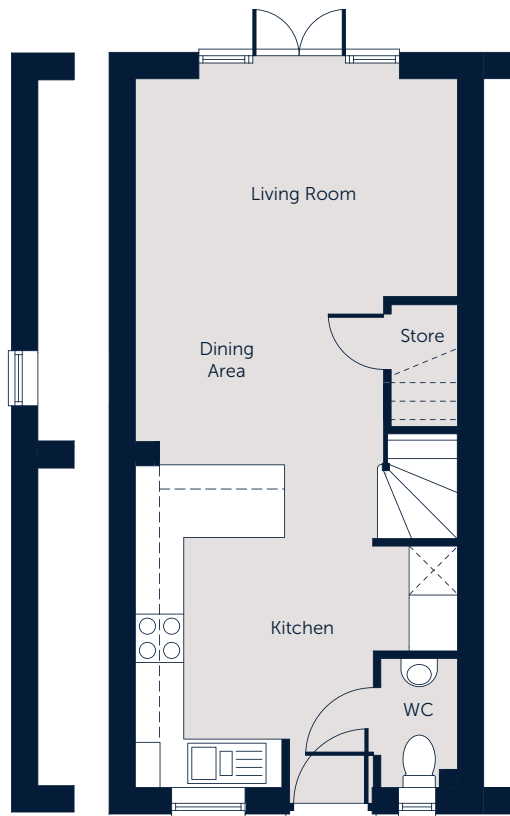
Gross internal floor area 854 sq ft

THE POPLAR
2 BEDROOM HOME

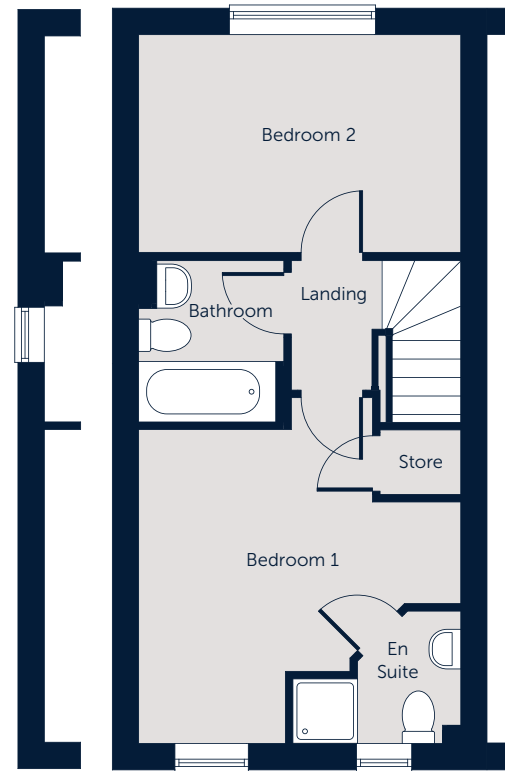


THE POPLAR

FLOOR PLAN



GROUND FLOOR



FIRST FLOOR

- Open plan kitchen/living/dining room with glazed doors to the garden
- Downstairs cloakroom
- Useful under stairs store
- Master bedroom with en-suite shower room
- Second double bedroom
- Well equipped family bathroom

Please note:
Illustration and plans show a typical house type. The house type may be built in a range of elevational finishes using a variety of materials. Floor plans and window positions may vary from plot to plot. This is because we operate a policy of continuous improvement and we work within the needs of the Planning Authorities. Please ask your Sales Executive for the precise details of the finish and specifications of your chosen home

GROUND FLOOR

Living/Dining Room
4.73m x 3.99m (15'6" x 13'1")

Kitchen
4.00m x 3.07m (13'2" x 10'1")

WC
1.60m x 0.95m (5'3" x 3'1")

FIRST FLOOR

Bedroom 1
3.89m x 3.99m (12'9" x 13'1")

En-Suite
1.64m x 2.04m (5'5" x 6'8")

Bedroom 2
2.69m x 3.99m (8'10" x 13'1")

Bathroom
2.00m x 1.80m (6'7" x 5'11")

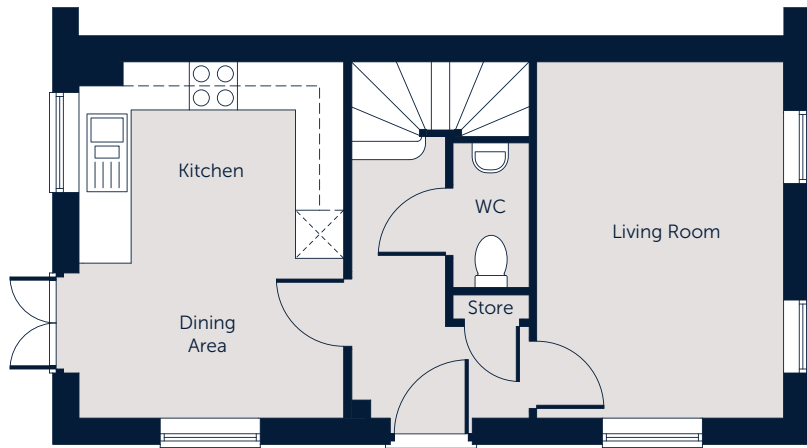
NB: All dimensions are maximum and may vary from plot to plot.

Gross internal floor area 769 sq ft

THE ELM
2 BEDROOM HOME



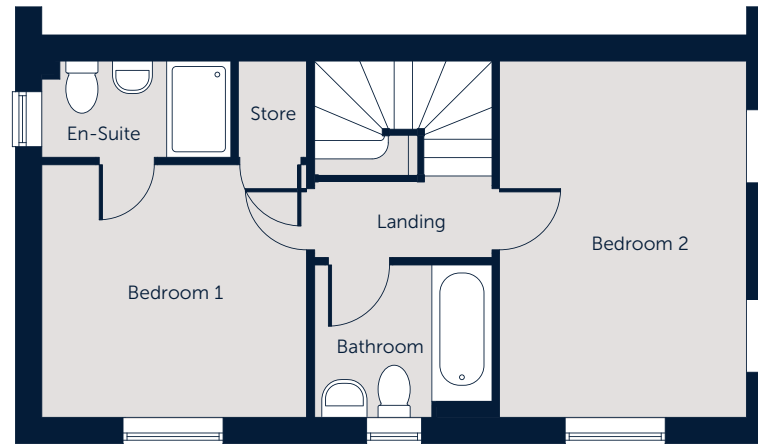
THE ELM FLOOR PLAN



GROUND FLOOR

- Open plan kitchen/dining room with glazed doors to the garden
- Dual aspect living room
- Downstairs cloakroom
- Useful store cupboard
- Master bedroom with en-suite shower room
- Second double bedroom
- Well equipped family bathroom

Please note:
Illustration and plans show a typical house type. The house type may be built in a range of elevational finishes using a variety of materials. Floor plans and window positions may vary from plot to plot. This is because we operate a policy of continuous improvement and we work within the needs of the Planning Authorities. Please ask your Sales Executive for the precise details of the finish and specifications of your chosen home



FIRST FLOOR

GROUND FLOOR

Living Room
4.44m x 3.07m (14'7" x 10'1")

Kitchen/Dining
4.44m x 3.30m (14'7" x 10'10")

WC
1.80m x 0.95m (5'11" x 3'1")

FIRST FLOOR

Bedroom 1
3.15m x 3.30m (10'4" x 10'10")

En-Suite
1.20m x 2.35m (3'11" x 7'9")

Bedroom 2
4.44m x 3.07m (14'7" x 10'1")

Bathroom
1.90m x 2.21m (6'3" x 7'3")

NB: All dimensions are maximum and may vary from plot to plot.

Gross internal floor area 854 sq ft